

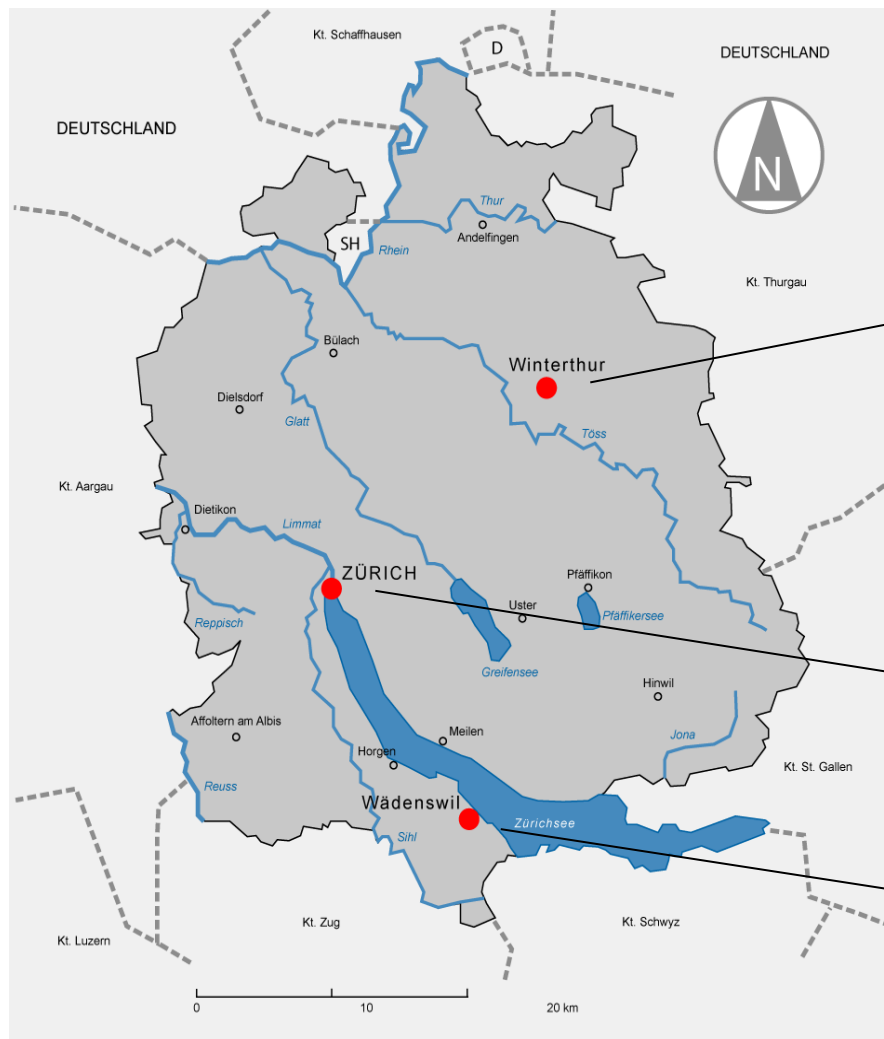
ZHAW Zurich University of Applied Sciences

25 October, 2013

Prof. Dr. Jean-Marc Piveteau

President of ZHAW

ZHAW : 3 LOCATIONS, 8 SCHOOLS



- School of Architecture, Design and Civil Engineering
- School of Health Professions
- School of Applied Linguistics
- School of Engineering
- School of Management and Law

- School of Applied Psychology
- School of Social Work

- School of Life Sciences and Facility Management

SERVICE LEVELS OF THE ZHAW

Education

- 26 Bachelor's degree programmes
- 13 consecutive Master's degree programmes

Continuing education

- 44 MAS/EMBA

R&D and services

- More than 30 institutes and centres

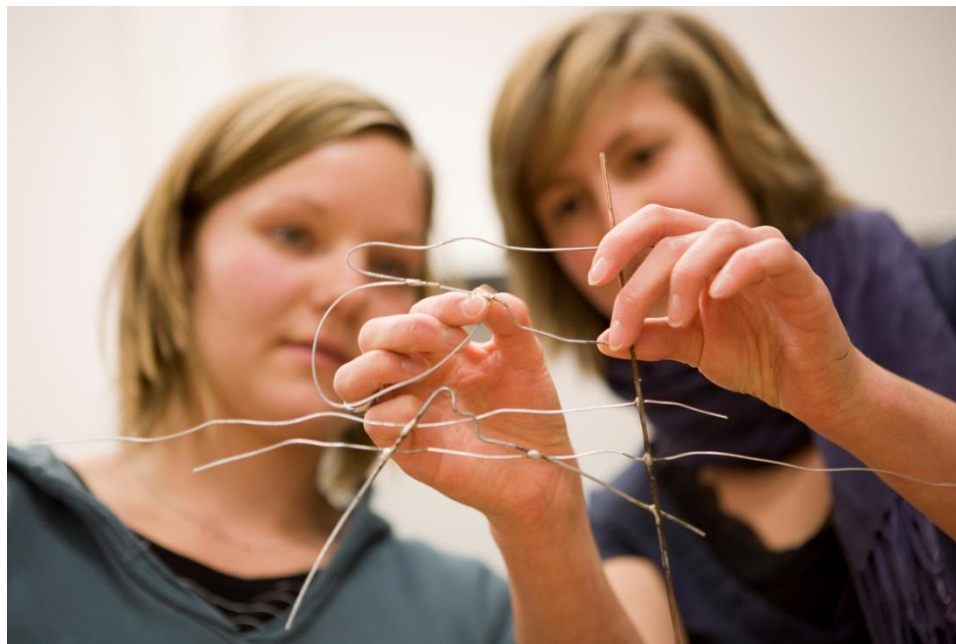


SUCCESS FACTORS OF THE ZHAW

- **Practice-oriented, scientifically-based university education**
 - **Graduates are able to take up demanding positions straight away**
- **Carefully structured, goal-directed training**
- **Close contacts between the university and the world of work**
 - **Projects/assignments with a high practical orientation**
 - **Lectures with scientific education and extensive work experience**

KEY FIGURES (AS OF 31.12.2012)

- 10,660 students
- 5,099 continuing education participants (MAS, DAS, CAS)
- 2,640 employees

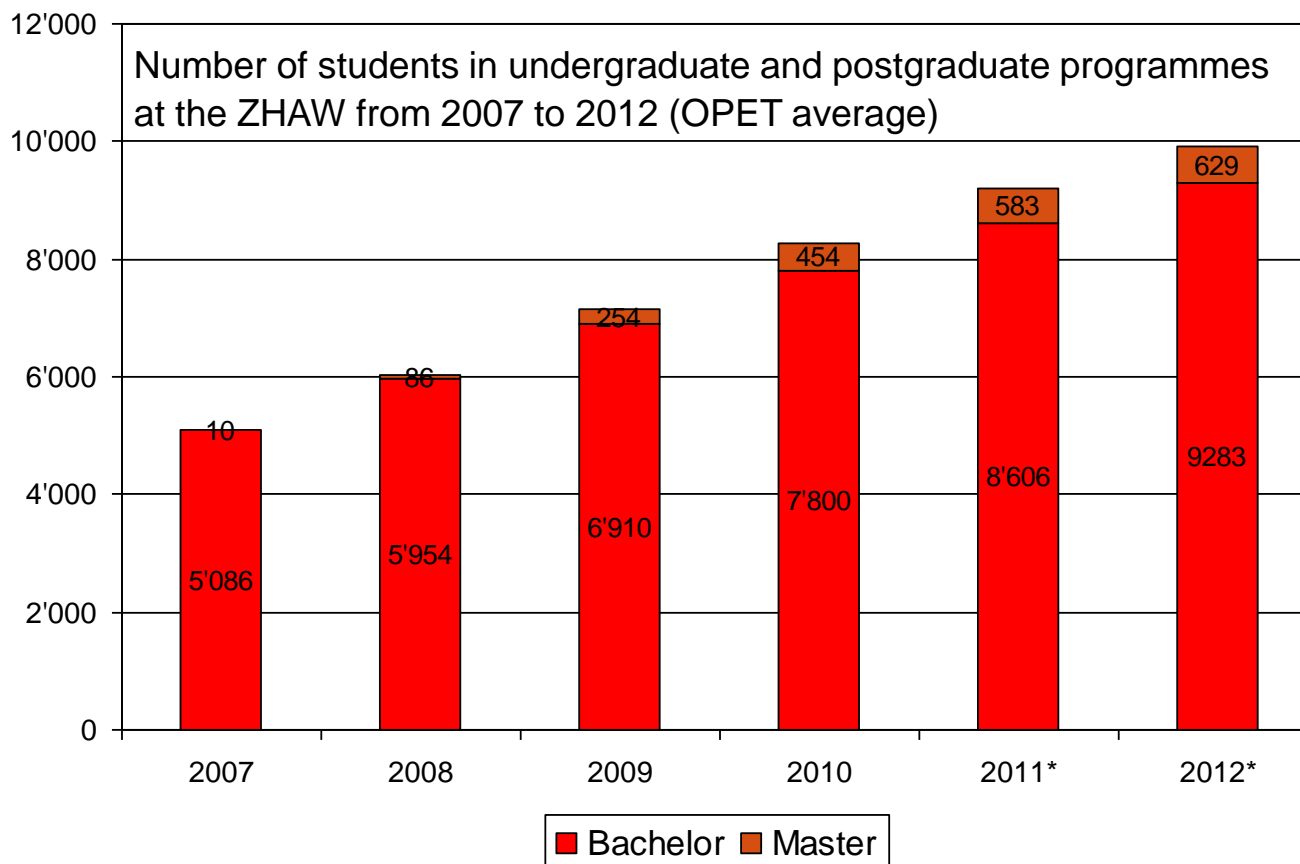


KEY FIGURES (AS OF 31.12.2012)

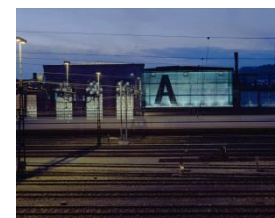
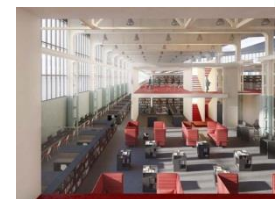
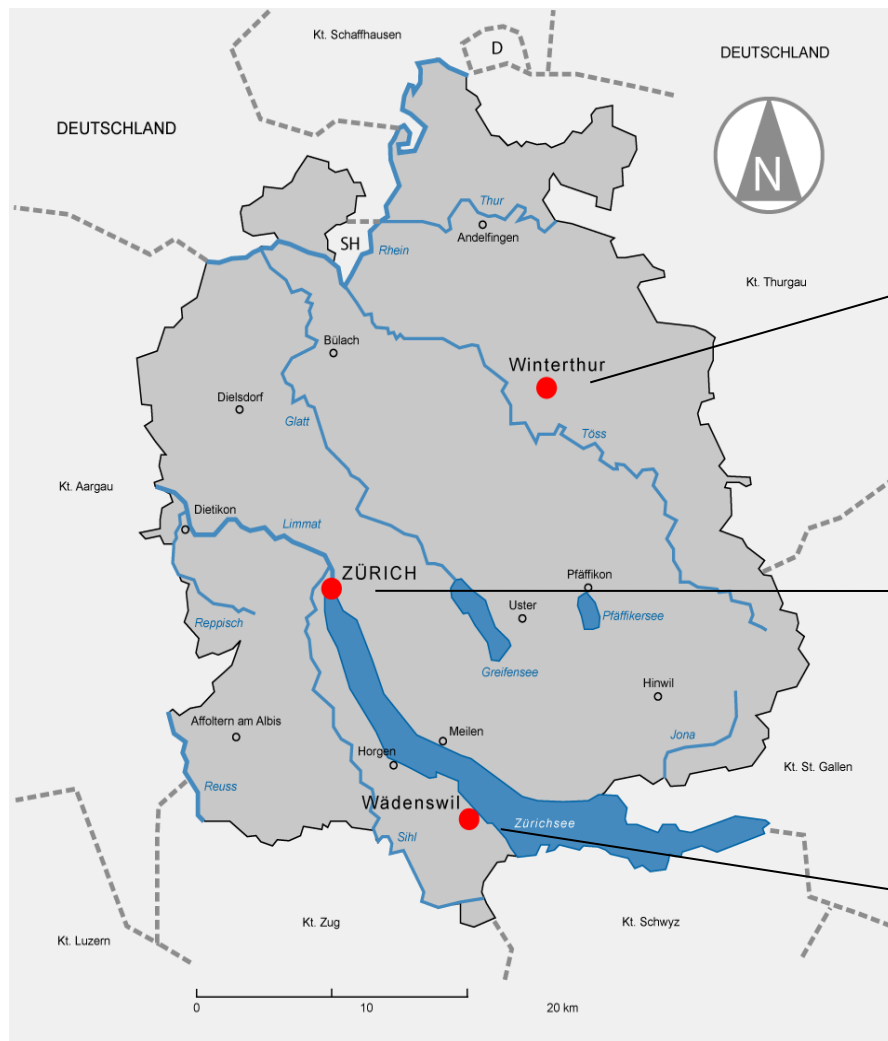
- CHF 386 million total investment
- CHF 81 million total investment in research & development
- 352 partner universities



THE ZHAW IS GROWING...



ZHAW : LOCATION DEVELOPMENT



STRATEGIC AREA OF FOCUS: ENERGY

Energy is an important research topic at the ZHAW

- ZHAW offers strong potential for collaboration between various disciplines
- Co-management of the competence centre “Economics, environment, law and behaviour” (SCCER Swiss Competence Centres for Energy Research)
- More than a hundred ZHAW energy projects in the “Energy research database” of the Swiss Federal Office of Energy



EXAMPLE OF JOINT PROJECT

SmartCell (Project of the EU Seventh Framework Program)

rational design of plant systems for the sustainable generation of value-added industrial products.

Partners

Plant Advanced Technologies in Nancy
Laboratoires Pierre Favre, Castres



EXAMPLE OF JOINT PROJECT

Summerschool on international commercial arbitration with a focus on intercultural exchange



OUTLOOK

Strengthen R&D

- Energy as an area of focus, maybe additional areas
- Strengthen R&D in areas where the acquisition of third-party funds is more difficult
- Promote interdisciplinary research projects



OUTLOOK

Anchoring

- Strengthen international positioning
 - Identify and utilise synergies in the area of internationalisation
- Strengthen regional and national anchoring
 - E.g. collaboration with business incubators (“Technopark”, “grow”) and the “Innovationspark”



Thank you for your attention!