

Leading House MENA – Kick-off workshop

Prof. Nancy Helou, HESAV

Working Group Session on Lebanon

06.03.2018

Overview

Panorama of the Higher
Education System

Scientific Interest

Exchange and Development
Opportunities

Challenges

Discussion



10,452 sq km

Democratic republic based on confessionalism

18 religious sects

LHMENA in Lebanon

Panorama of the Higher Education System

- **Three higher educational systems:**
 1. General education
 2. Technical and professional Institutes
 3. University colleges
- **1866: American University of Beirut; 1875: Université Saint-Joseph**
- **1953: 1 public university: Lebanese University**
- **Curently: a total of 47 private non-profit university colleges and 1 public**
- **Teaching languages: English or French**

Source: Prof. Dr. Ahmad Jammal, Director General of Higher Education in Lebanon, ajammal@higher-edu.gov.lb

LHMENA in Lebanon

Panorama of the Higher Education System

- **Well established diplomas' recognition system**
 - Complies with international recognition conventions (UNESCO, Lisbon, etc)
 - International accreditation bodies and recognition (**USA and/or European**)
 - Necessity with large mobility
 - Governmental evaluation committee
 - University entrance exams (SAT, MCAT, GMAT) and
 - Orders and National exams (MDs, Engineers, Nursing, Physiotherapy, etc)
- **Obligation to self-financing research at 5% of the budget** (including scholarships)
- **Diversity, ECTS' transfer, open to international recognition and accreditation**
- **Participation in the European exchange programs (Tempus, Erasmus, Expert Team for Reform in ES – HERE, Programme CEDRE Franco-Libanais)**

Source: Prof. Dr. Ahmad Jammal, Director General of Higher Education in Lebanon, ajammal@higher-edu.gov.lb

LHMENA in Lebanon

Panorama of the Higher Education System

▪ **Lebanese universities 2017 ranking in the top 50 of the region:**

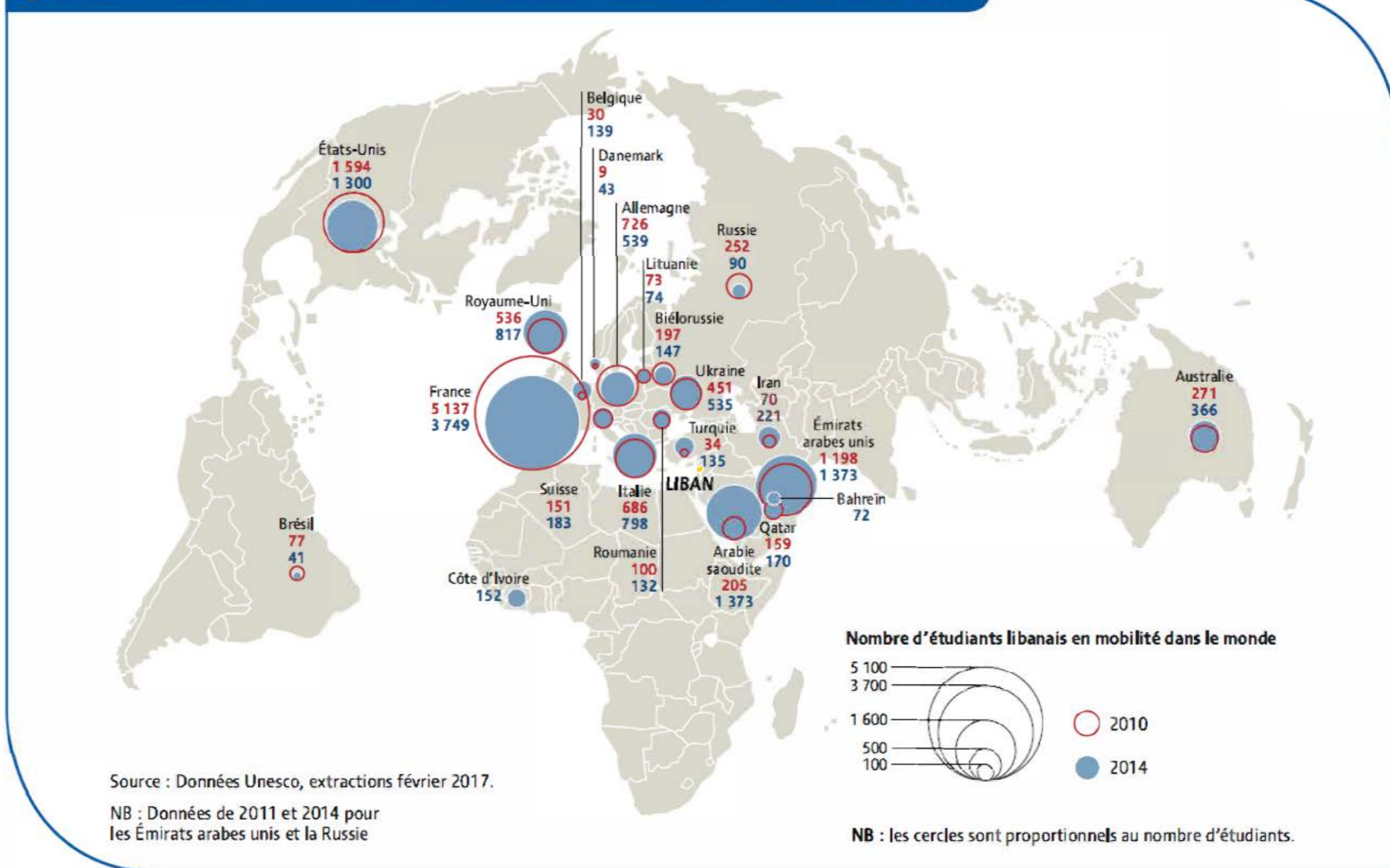
- American University of Beirut: 1st in the region
41st on Graduate Employability Ranking internationally
- Saint Joseph University: 12th
- Lebanese American University: 16th
- Lebanese University: 25th
- University of Balamand: 30th
- Notre Dame University: 39th
- Holy Spirit University of Kaslik: 40th

Source: <https://www.topuniversities.com/universities>



Lebanese Students' Mobility

Évolution de la mobilité internationale des étudiants libanais (2010-2014)



Scientific Interest

LHMENA in Lebanon

Scientific Interest

- **The first country of interest in the MENA region to Swiss researchers**
- **14 institutional agreements between Switzerland and Partners in Lebanon, however **limited to only 3 institutions****
- **Autonomy of universities**
- **Engaged partners and stakeholders**
- **Active exchange of researchers, lecturers and students**
- **Promoting international research and conducting culturally sensitive research**

LHMENA in Lebanon

Scientific Interest

- **Development of areas of exchange that responds to current needs in Lebanon mainly: healthcare, environment, urban and social infrastructure**
- **Socio-economic development in the region**
 - Partnership between public, private and socio-economic partners
 - Major role in developing resources for Lebanon and the region

Exchange and Development Opportunities

Exchange and Development Opportunities

Risk Management and Healthcare Policy

Dovepress

open access to scientific and medical research

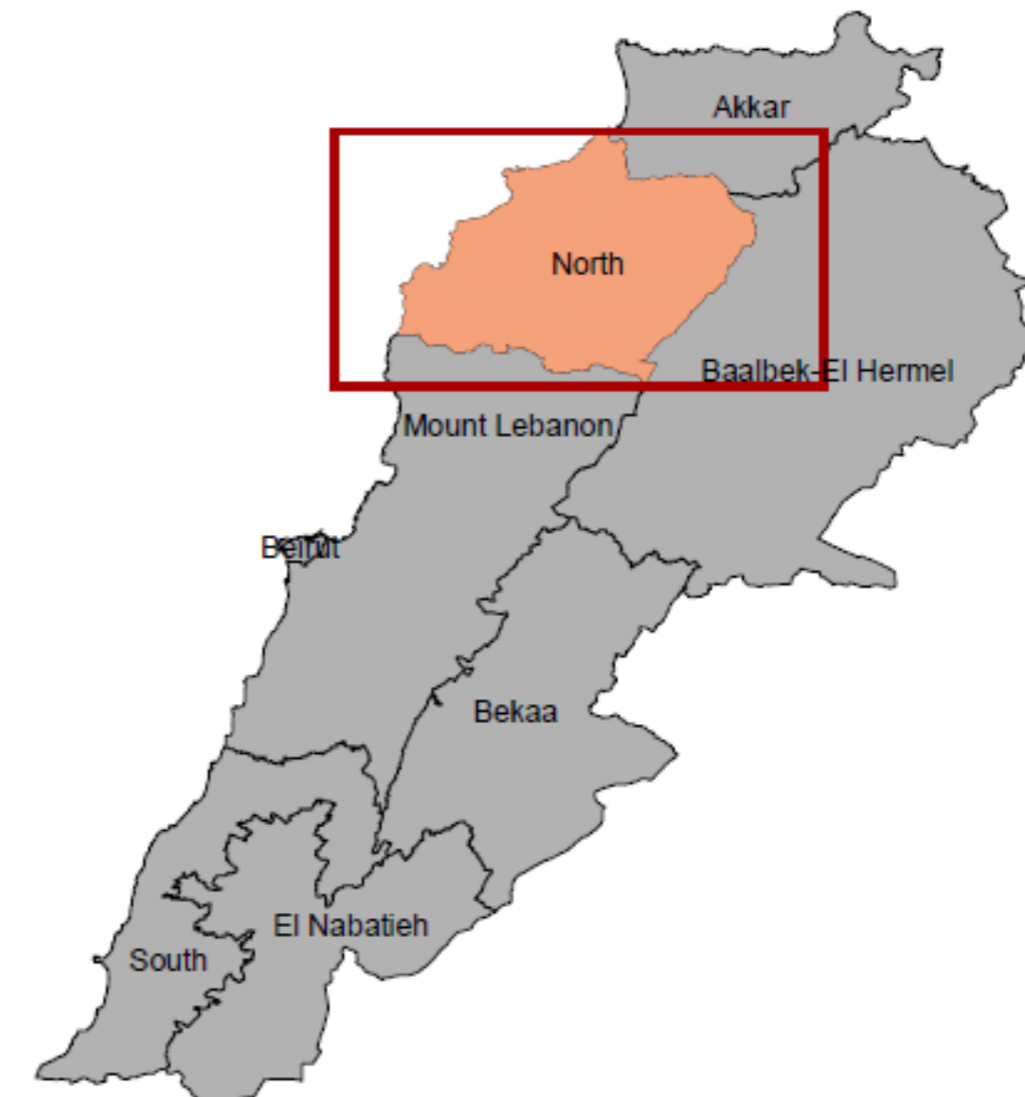
 Open Access Full Text Article

ORIGINAL RESEARCH

The Lebanese–Syrian crisis: impact of influx of Syrian refugees to an already weak state

Zeinab Cherri
Pedro Arcos González
Rafael Castro Delgado

- **Estimated > 1.5 million Syrian Refugees in a state of only 4 million Lebanese**



■ Cooperation with Mediterranean countries

1. Main challenge for Lebanon:

1. Water quality deterioration
2. Lack of water, poor sanitation, sharp increase in communicable diseases reported among refugees' communities and transmitted to close Lebanese community
3. Increase in solid waste generation and pollution

(Source: <http://www.undp.org/content/dam/lebanon/docs/Energy%20and%20Environment/Publications/EASC-WEB.pdf>)

 **Need for infrastructure development in order to dispose solid waste generated by refugees and host communities without affecting the Mediterranean sea**

*by Atef Hamdy, M. IWRA
Mediterranean Agronomic Research Institute
via Ceglie 23
Valenzano
BARI 70010
ITALY
Mahmoud Abu-Zeid, F. IWRA
National Water Research Center
Fum Ismailia Canal
PO. Box 74
Shoubra El-Kheima
CAIRO
EGYPT
and C. Lacirignola
Mediterranean Agronomic Research Institute
via Ceglie 23
Valenzano
BARI 70010
ITALY*

Exchange and Development Opportunity

Need for sustainable innovation

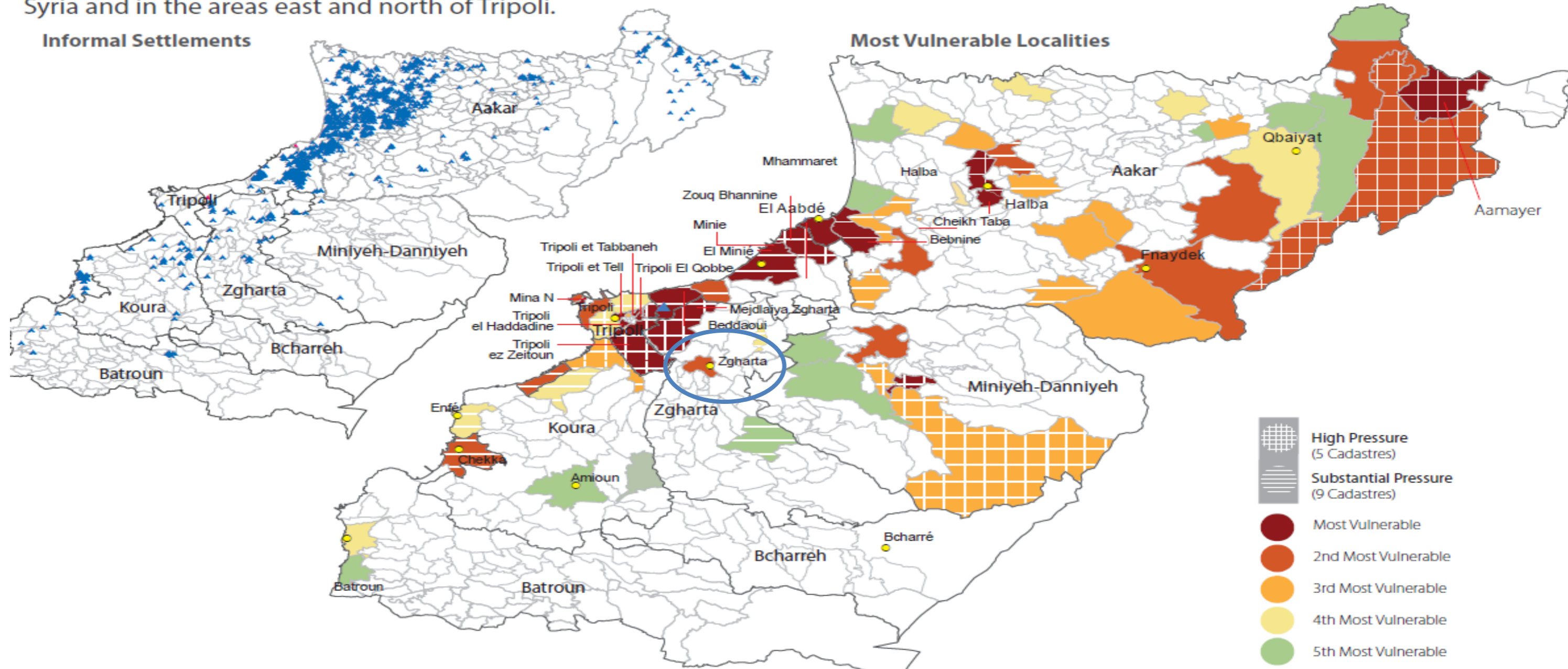


Exchange and Development Opportunities

Illustration Zgharta District

MOST VULNERABLE LOCALITIES

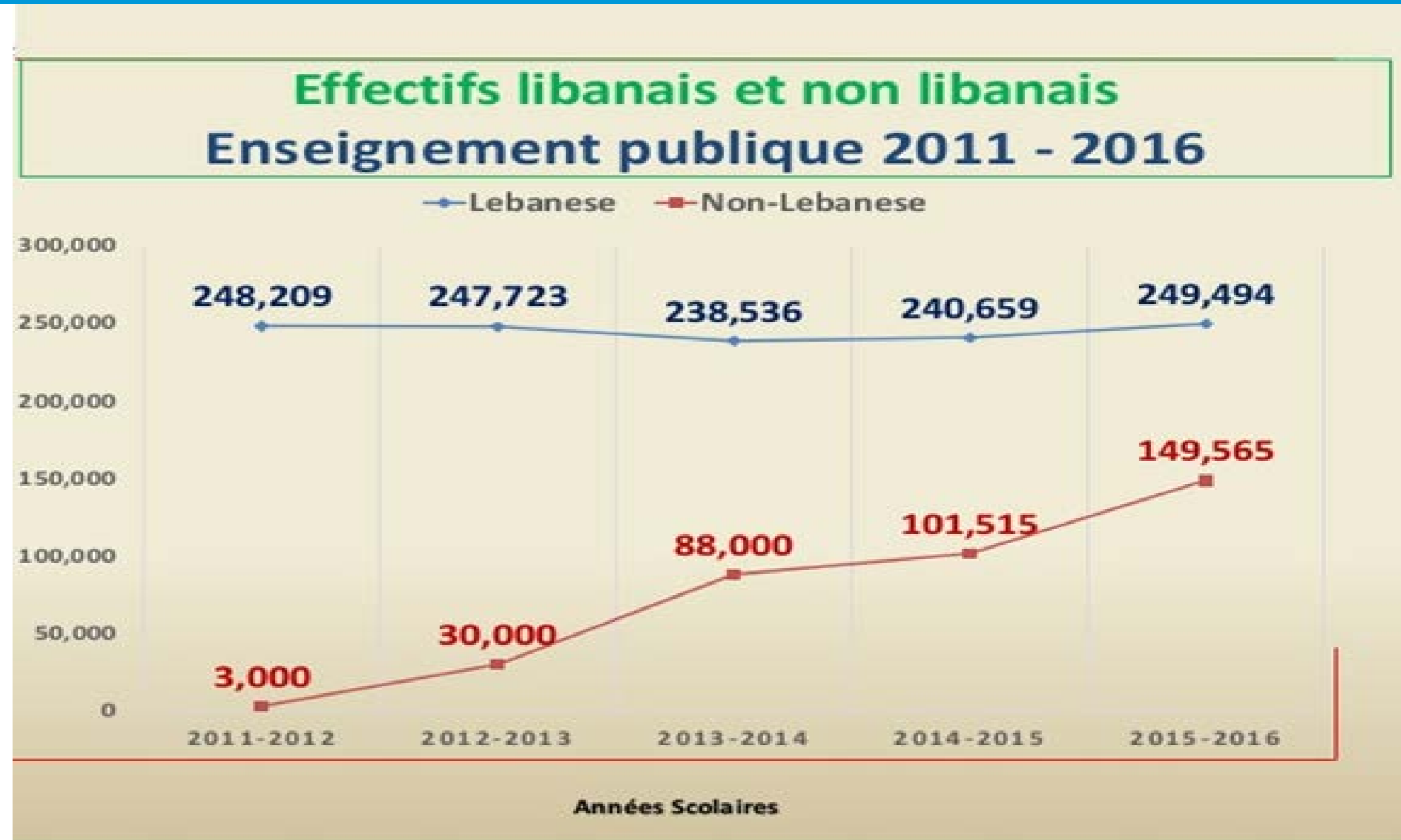
There are 63 vulnerable localities in northern Lebanon, 14 of which are classified as “most vulnerable” based on low incomes, lack of access to health, education and water, and poor housing conditions. Twenty-eight of the 63 localities are also considered to be “under high pressure” with Syrians outnumbering Lebanese by a factor of 3 to 1. The most vulnerable localities are along the border with Syria and in the areas east and north of Tripoli.



Source: https://reliefweb.int/sites/reliefweb.int/files/resources/North-Akkar_G-Profile_160804.pdf
swissuniversities

Exchange and Development Opportunity

Public Schools



Source: Prof. Dr. Ahmad Jammal, Director General of Higher Education in Lebanon, ajammal@higher-edu.gov.lb
swissuniversities

Exchange and Development Opportunity Illustration Zgharta District



UNHCR UN Refugee Agency

Exchange and Development Opportunity

Illustration Zgharta District



- **A population of approx. 90000 inhabitants**
 - 15000-19000 of inhabitants are Syrian refugees
- **Self-sustained and stable local economic community**
- **Rich heritage and culture**
 - Forest of Cedars, Kadisha Valley UNESCO world heritage site
 - Dialect with a distinctive accent: original syriac accent applied on Arabic
 - Historical patrimony since 18th C. and Culinary heritage
 - High political and cultural impact on the country since 19th C.
Writers, Major historian, painters
 - Rival political parties alliance 2016 (source: The Daily Star Lebanon)

Exchange and Development Opportunity

Illustration Zgharta District

- **Local Hospital of 180 beds (Centre Hospitalier du Nord)**
 - University hospital affiliated to Saint-Joseph University
 - Multidisciplinary patient centered approach
 - Engagement for up-to-date care and research with annual publication in international medical journals

Exchange and Development Opportunity

Illustration Zgharta District

▪ **Mobility of young scientists**

- **Swiss surgeons from the « Coeurs pour tous » operated children with congenital heart disease at the Centre Hospitalier du Nord**
- **Previous exchange with employees receiving training at the HUG**
- **Centre Hospitalier du Nord looking to create a Nursing Bachelor in collaboration with the Antonin University**
- **Interest in developing post diploma continuing education (CAS/DAS in geriatrics etc..)**
- **Joint exchange with KMC hospital (Mountain Lebanon District) affiliated to the American University of Beirut Medical Center**
- **And many other disciplines...**

Exchange and Development Opportunity

Illustration Zgharta District

- **Innovation projects fostering collaboration between academia and the professional socio-economic sectors**
 - **Zgharta facing development and research needs:**
 1. Building infrastructure and social care
 2. Environmental sanitation of drinking water and sewage treatment in order to clean all emptying in the Mediterranean sea and used water
 3. Managing the soil from pesticides use to crop and food production
 4. Regional urban planning on the mid and long-term with the Academy of Fine Arts

Challenges...

LHMENA in Lebanon

Challenges

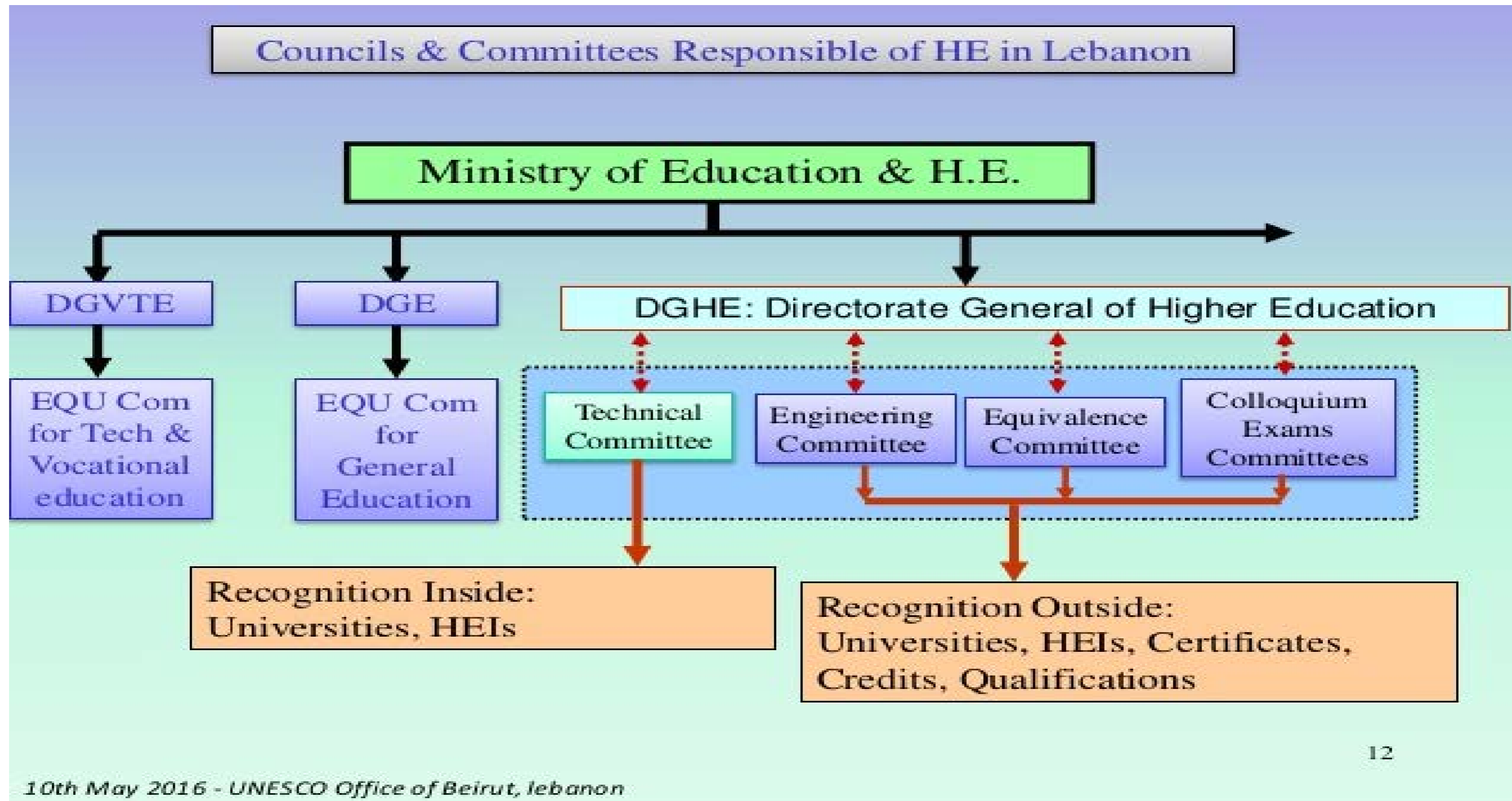
- **Complex political context and institutions**
- **Economic growth rate impact on research donations and governmental funds**
 - University research budget
- **High number of universities and diversity of the system**
- **Research and development targeting**
 - Simple Operational Solutions
 - Financial Viability

Your thoughts on the Scientific Collaboration between Switzerland and Lebanon...



THANK YOU!

Lebanese Higher Education Recognition System

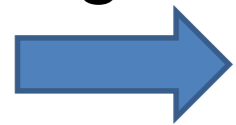


LHMENA in Lebanon

Panorama of the Higher Education System

▪ **Increased number of students in the last 10 years by 44.6%**

- from 132.645 students in 2004 to 199.700 in 2016;
- 54.3% women
- 100% increase in the private sector and 7% in the public.
- Increase in foreign students from 9.6% in 2004 to 16.6% in 2010; decrease to 12% in 2016
- Increase due to the creation of universities in every region and the development of new programs.



University human resources increase

LHMENA in Lebanon

Panorama of the Higher Education System

- **1 public institution for higher education: Lebanese University**
 - 1.5% of the total government spending
(Source:http://www.charbelnahas.org/textes/Economie_et_politiques_economiques/HigherEducationFinancing-Lebanon.pdf)
- **47 private non-profit university colleges**
 - Student Tuition (Household expenditure > 2.57% GDP)
- **Obligation to self-financing research at 5% of the budget** (including scholarships)
- **Diversity, ECTs' transfer, open to international recognition and accreditation**
- **Participation in the European exchange programs (Tempus, Erasmus, Expert Team for Reform in ES – HERE, Programme CEDRE Franco-Libanais)**

Source: Prof. Dr. Ahmad Jammal, Director General of Higher Education in Lebanon, ajammal@higher-edu.gov.lb